

## EOS-940 SLIX2

# T A G E O S

## Datasheet

### High Performance and Versatility for Media Management and More

The EOS-940 SLIX2 HF inlay combines excellent performance and extended user memory with exceptional versatility for use in a wide range of applications such as, but not limited to, library and media management.

The inlay's compact footprint and square shape suit the needs of all types of media libraries as well as the automotive, healthcare, industrial manufacturing and logistics industries.

EOS-940 SLIX2 uses the newest member of NXP's SLIX product family, the ICODE SLIX2 IC. The chip offers full backward compatibility to SLIX, extended user memory size (2.5 kbit), and outstanding characteristics such as NXP originality signature, overall increased performance, and flexible user memory segmentation with separate access.



# T A G E O S

The EOS-940 SLIX2 inlay is available in dry, wet, paper-face and plastic-face formats.

Tageos was one of the first companies to qualify for ARC Quality Certification for its manufacturing operations from Auburn University RFID Lab.

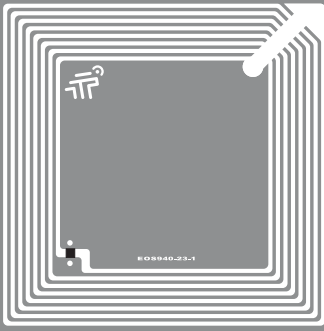
Like all Tageos' RFID products, EOS-940 SLIX2 complies with ISO 9001:2015 Quality Management System and ISO 14001:2015 Environmental Management System as well as Environmental Directives RoHS and REACH, utilizing sustainable materials such as FSC® certified paper whenever possible.

### Overview

|                 |                                       |
|-----------------|---------------------------------------|
| IC:             | NXP ICODE SLIX2                       |
| User Memory:    | 2560 bit                              |
| UID:            | 64 bit                                |
| Frequency Band: | 13.56 MHz                             |
| Protocol:       | ISO/IEC 15693 (Vicinity) / Type 5 Tag |

### Application Areas

- Brand Protection
- Food & Beverage
- Library & Media Management
- Product Authentication
- Supply Chain Management



# EOS-940 SLIX2

## T A G E O S

### Technical Overview

|                       | Dry                               | Wet                             | Paper-face                      | Plastic-face                    |
|-----------------------|-----------------------------------|---------------------------------|---------------------------------|---------------------------------|
| Product Code          | 9400000001                        | 9400000002                      | 9400000004                      | 9400000003                      |
| Antenna Size          | 47 x 47 mm<br>1.85 x 1.85 in      | 47 x 47 mm<br>1.85 x 1.85 in    | 47 x 47 mm<br>1.85 x 1.85 in    | 47 x 47 mm<br>1.85 x 1.85 in    |
| Finish Size           | -                                 | 50 x 50 mm<br>1.97 x 1.97 in    | 50 x 50 mm<br>1.97 x 1.97 in    | 50 x 50 mm<br>1.97 x 1.97 in    |
| Web Width             | 54.0 ± 1 mm<br>2.126 ± 0.04 in    | 54.0 ± 1 mm<br>2.126 ± 0.04 in  | 54.0 ± 1 mm<br>2.126 ± 0.04 in  | 54.0 ± 1 mm<br>2.126 ± 0.04 in  |
| Pitch                 | 53.98 ± 0.2 mm<br>2.125 ± 0.01 in | 53.98 ± 1 mm<br>2.125 ± 0.04 in | 53.98 ± 1 mm<br>2.125 ± 0.04 in | 53.98 ± 1 mm<br>2.125 ± 0.04 in |
| Antenna Material      | Aluminium                         | Aluminium                       | Aluminium                       | Aluminium                       |
| Front Face            | -                                 | PET Clear                       | Paper TT                        | PP White                        |
| Inlay Substrate       | PET Clear                         | PET Clear                       | PET Clear                       | PET Clear                       |
| Inlay Adhesive        | -                                 | Permanent                       | Permanent                       | Permanent                       |
| Liner                 | -                                 | Paper                           | Paper                           | Paper                           |
| Operating Temperature | -40°C / +85°C<br>-40°F / +185°F   | -40°C / +85°C<br>-40°F / +185°F | -40°C / +85°C<br>-40°F / +185°F | -40°C / +85°C<br>-40°F / +185°F |
| Final Inspection      | 100% tested                       | 100% tested                     | 100% tested                     | 100% tested                     |

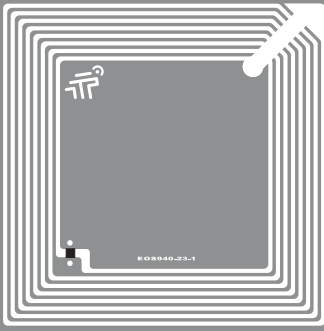
#### Contact:

Tageos SAS (HQ) . 1340 rue de Pinville . 34000 Montpellier . France . sales@tageos.com



**Graphs:** All the graphs are indicative; performance in real life applications may vary. The data has been determined based on calculations for transmitters with a normal output power level and respective IC silicon. **Storage & handling precautions:** Observe standard storage and handling practices to minimize Electro Static Discharge. Tageos reserves the right to change its products and services at any time without notice. As our products are used in circumstances beyond our control, we cannot be held liable for any damages caused through their use. This is a general purpose product not designed or intended for any specific application.

© 2023 Tageos All rights reserved. The pictures and illustrations found on this document are for illustration purposes only, and do not necessarily represent the exact products. Tageos is a registered trademark. All other trademarks are the property of their respective owners. Reproduction in whole or in part is prohibited without the prior written consent of the copyright owner. The information presented in this document does not form part of any quotation or contract, is believed to be accurate and reliable and may be changed without notice. No liability will be accepted by the publisher for any consequence of its use.

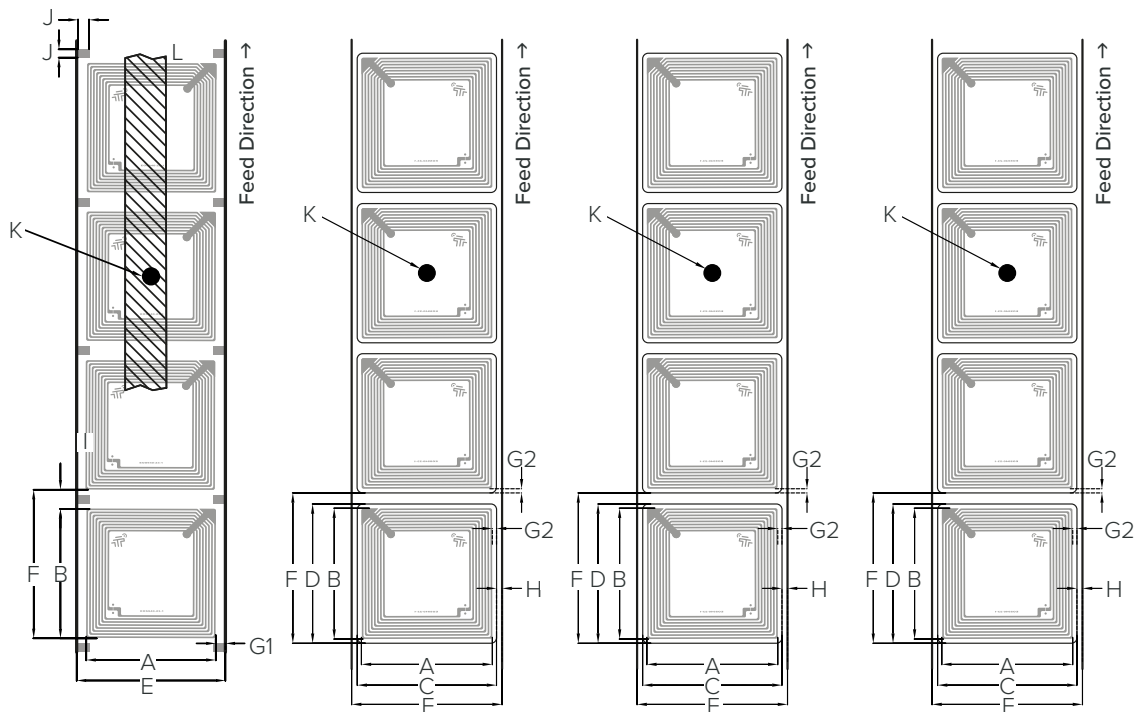


# EOS-940 SLIX2

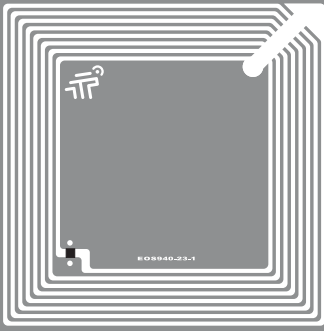
# TAGEOS

## Product Specifications

### Mechanical Dimensions



| mm / in                 | Dry                           | Wet                      | Paper-face               | Plastic-face             |
|-------------------------|-------------------------------|--------------------------|--------------------------|--------------------------|
| Product Code            | 9400000001                    | 9400000002               | 9400000004               | 9400000003               |
| Antenna Size            | A x B 47 x 47 / 1.85 x 1.85   | 47 x 47 / 1.85 x 1.85    | 47 x 47 / 1.85 x 1.85    | 47 x 47 / 1.85 x 1.85    |
| Finish Size             | C x D -                       | 50 x 50 / 1.97 x 1.97    | 50 x 50 / 1.97 x 1.97    | 50 x 50 / 1.97 x 1.97    |
| Web Width               | E 54.0 ± 1 / 2.126 ± 0.04     | 54.0 ± 1 / 2.126 ± 0.04  | 54.0 ± 1 / 2.126 ± 0.04  | 54.0 ± 1 / 2.126 ± 0.04  |
| Pitch                   | F 53.98 ± 0.2 / 2.125 ± 0.01  | 53.98 ± 1 / 2.125 ± 0.04 | 53.98 ± 1 / 2.125 ± 0.04 | 53.98 ± 1 / 2.125 ± 0.04 |
| Antenna to Web Edge     | G1 3.5 ± 1 / 0.138 ± 0.04     | -                        | -                        | -                        |
| Antenna to Die-cut      | G2 -                          | 1.5 ± 1 / 0.059 ± 0.04   | 1.5 ± 1 / 0.059 ± 0.04   | 1.5 ± 1 / 0.059 ± 0.04   |
| Die-Cut to Web Edge - H | -                             | 2.0 ± 1 / 0.079 ± 0.04   | 2.0 ± 1 / 0.079 ± 0.04   | 2.0 ± 1 / 0.079 ± 0.04   |
| Antenna Gap             | I 6.98 / 0.275                | -                        | -                        | -                        |
| Converting Spot         | J 4.00 x 3.00 / 0.157 x 0.118 | -                        | -                        | -                        |
| Bad Mark                | K Ø 6.0 mm / 0.236 in         | Ø 6.0 mm / 0.236 in      | Ø 6.0 mm / 0.236 in      | Ø 6.0 mm / 0.236 in      |
| Interleave              | L Yes                         | No                       | No                       | No                       |
| Registration Mark       | M No                          | No                       | No                       | No                       |



# EOS-940 SLIX2

# TAGEOS

## Packing Details

|                       | Dry  | Wet  | Paper-face  | Plastic-face  |
|-----------------------|--|--|---|---|
| Product Code          | 9400000001   | 9400000002   | 9400000004  | 9400000003  |
| Delivery Forma        | Roll (single row)                                  | Roll (single row)                                  | Roll (single row)                                   | Roll (single row)                                   |
| Core Inner Diameter   | 76 mm / 2.99 in                                    | 76 mm / 2.99 in                                    | 76 mm / 2.99 in                                     | 76 mm / 2.99 in                                     |
| Roll Outer Diameter   | 331 mm / 13.03 in                                  | 331 mm / 13.03 in                                  | 207 mm / 8.15 in                                    | 199 mm / 7.83 in                                    |
| Unwinding Direction   | Inlay on outside of roll                           | Inlay on outside of roll                           | Inlay on outside of roll                            | Inlay on outside of roll                            |
| Standard Roll Size    | 13 000   | 8 000  | 2 000   | 2 000   |
| Min. Guar. Yield/Roll | 98.5%  | 98.5%  | 98.5%   | 98.5%   |
| Box Dimensions        | 39.5 x 39.0 x 17.0 cm /<br>15.56 x 15.35 x 6.69 in | 39.5 x 39.0 x 17.0 cm /<br>15.56 x 15.35 x 6.69 in | 26.0 x 26.0 x 37.0 cm /<br>10.24 x 10.24 x 14.57 in | 26.0 x 26.0 x 37.0 cm /<br>10.24 x 10.24 x 14.57 in |
| Roll/Box              | 2  | 2  | 6   | 6   |
| Inlay/Box             | 26 000   | 16 000   | 12 000  | 12 000  |
| Box Gross Weight      | 8.52 kg / 18.78 lbs                                | 8.40 kg / 18.52 lbs                                | 8.48 kg / 18.70 lbs                                 | 8.06 kg / 17.77 lbs                                 |
| Pallet Dimensions     | 120 x 80 x 151 cm /<br>47.2 x 31.5 x 59.4 in       | 120 x 80 x 151 cm /<br>47.2 x 31.5 x 59.4 in       | 120 x 80 x 126 cm /<br>47.2 x 31.5 x 49.6 in        | 120 x 80 x 126 cm /<br>47.2 x 31.5 x 49.6 in        |
| Boxes/Pallet          | 48   | 48   | 36  | 36  |
| Inlay/Pallet          | 1 248 000  | 768 000  | 432 000   | 432 000   |
| Pallet Gross Weight   | 434 kg / 844 lbs                                   | 428 kg / 833 lbs                                   | 330 kg / 728 lbs                                    | 315 kg / 695 lbs                                    |

### Contact:

Tageos SAS (HQ) . 1340 rue de Pinville . 34000 Montpellier . France . sales@tageos.com



© 2023 Tageos All rights reserved. The pictures and illustrations found on this document are for illustration purposes only, and do not necessarily represent the exact products. Tageos is a registered trademark. All other trademarks are the property of their respective owners. Reproduction in whole or in part is prohibited without the prior written consent of the copyright owner. The information presented in this document does not form part of any quotation or contract, is believed to be accurate and reliable and may be changed without notice. No liability will be accepted by the publisher for any consequence of its use.