

EOS-241 M750

T A G E O S

Datasheet

FCC-Compliant Versatile Solution for Retail and Logistics

The EOS-241 M750 inlay combines superior read performance with a compact antenna size that is appropriate for item-level applications in retail and logistics. Optimized for use on diverse packaging materials, the inlay is ideal for inventory management in a wide range of non-food industries including retail apparel, supply chain, logistics, and pharmaceutical/healthcare.

It is based on Impinj's M750 RAIN RFID IC, which features 96-bit EPC memory, and provides high performance, fast inventory capability, and advanced features for next-generation, universal RAIN RFID tags. The IC is well suited for solutions that include high-speed inventory counting, loss prevention with frictionless self-checkout, and embedded tagging with seamless product returns.



T A G E O S

The EOS-241 M750 inlay is an FCC-tuned design and it is available in dry and wet formats.

Tageos was one of the first companies to qualify for ARC Quality Certification for its manufacturing operations from Auburn University RFID Lab.

Like all Tageos' RFID products, EOS-241 M750 complies with ISO 9001:2015 Quality Management System, as well as Environmental Directives RoHS and REACH, utilizing sustainable materials such as FSC® certified paper whenever possible.

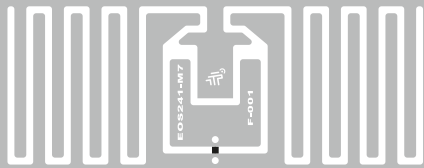
Overview

IC:	Impinj M750
EPC/User Memory:	96/32 bits
TID Memory:	96 bits / 48 bits unique S/N
Frequency Band:	860 - 960 MHz (FCC)
Protocol:	EPC Class 1 Gen 2 ISO 18000-6c

Application Areas

- Apparel
- Inventory Visibility
- Item Level Tagging
- Pharma & Healthcare
- Supply Chain Management



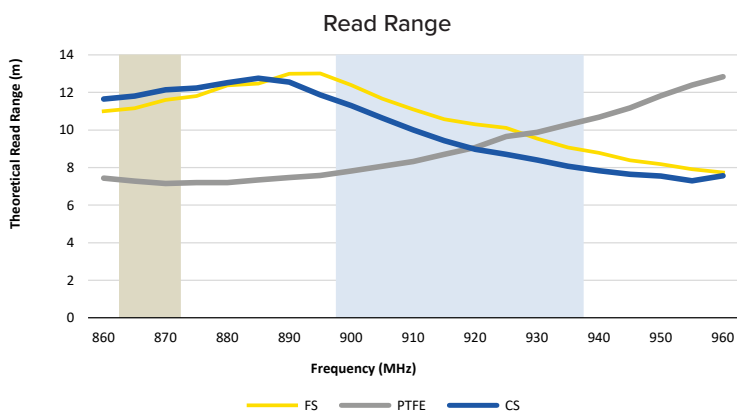


EOS-241 M750

TAGEOS

Technical Overview

	Dry inlay	Wet Inlay
Product Code	2400000208	2400000215
Antenna Size	42 x 16 mm 1.65 x 0.63 in	42 x 16 mm 1.65 x 0.63 in
Finish Size	-	44 x 18 mm 1.73 x 0.71 in
Web Width	48 ± 1 mm 1.89 ± 0.4 in	48 ± 1 mm 1.89 ± 0.04 in
Pitch	22.23 ± 0.5 mm 0.88 ± 0.02 in	22.23 ± 0.5 mm 0.88 ± 0.02 in
Antenna Material	Aluminium	Aluminium
Front Face	-	Clear PET
Inlay Substrate	Clear PET	Clear PET
Inlay Adhesive	-	Permanent
Operating Temperature	-40°C / +85°C -40°F / +185°F	-40°C / +85°C -40°F / +185°F
Final Inspection	100% tested	100% tested
ARC Approvals	-	-

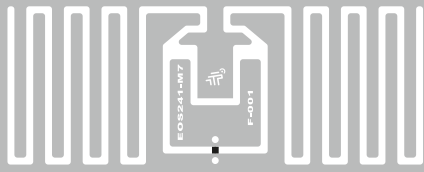


Contact us:
Tageos HQ . 1340 rue de Pinville . 34000 Montpellier . France . sales@tageos.com



Graphs: All the graphs are indicative; performance in real life applications may vary. The data has been determined based on calculations for transmitters with a normal output power level and respective IC silicon. **Storage & handling precautions:** Observe standard storage and handling practices to minimize Electro Static Discharge. Tageos reserves the right to change its products and services at any time without notice. As our products are used in circumstances beyond our control, we cannot be held liable for any damages caused through their use. This is a general purpose product not designed or intended for any specific application.

© 2022 Tageos All rights reserved. The pictures and illustrations found on this document are for illustration purposes only, and do not necessarily represent the exact products. Tageos is a registered trademark. All other trademarks are the property of their respective owners. Reproduction in whole or in part is prohibited without the prior written consent of the copyright owner. The information presented in this document does not form part of any quotation or contract, is believed to be accurate and reliable and may be changed without notice. No liability will be accepted by the publisher for any consequence of its use.

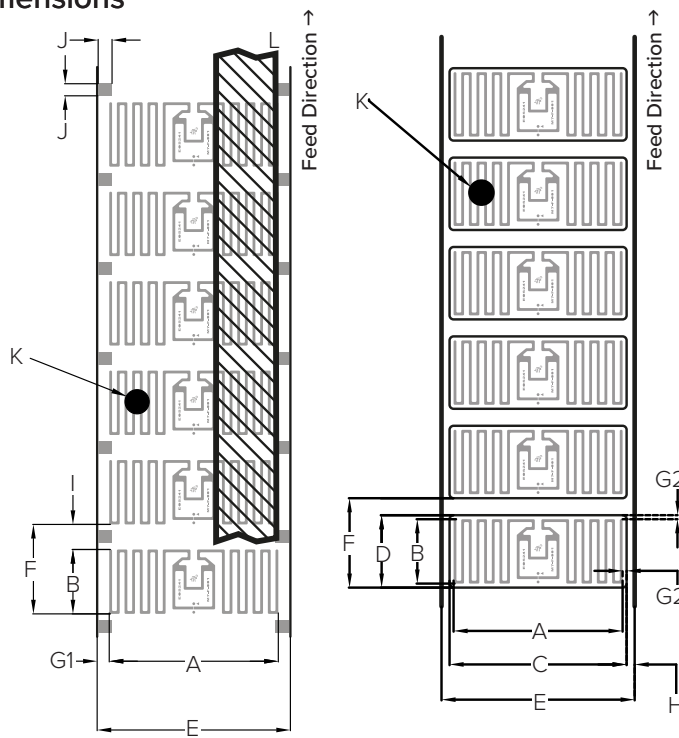


EOS-241 M750

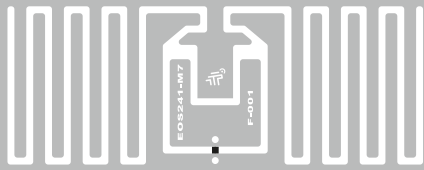
TAGEOS

Product Specifications

Mechanical Dimensions



	Dry Inlay	Wet Inlay
Product Code	2400000208	2400000215
Antenna Size	A x B 42 x 16 mm / 1.65 x 0.63 in	42 x 16 mm / 1.65 x 0.63 in
Finish Size	C x D -	44 x 18 mm / 1.73 x 0.71 in
Web Width	E 48 ± 1 mm / 1.89 ± 0.04 in	48 ± 1 mm / 1.89 ± 0.04 in
Pitch	F 22.23 ± 0.5 mm / 0.88 ± 0.02 in	22.23 ± 0.5 mm / 0.88 ± 0.02 in
Antenna to Web Edge	G1 3 ± 0.5 mm / 0.12 ± 0.02 in	-
Antenna to Die-cut	G2 -	1 ± 0.5 mm / 0.04 ± 0.02 in
Die-cut to Web Edge	H -	2 ± 1 mm / 0.06 ± 0.04 in
Antenna Gap	I 6.23 mm / 0.25 in	-
Converting Spot	J 3.45 x 3 mm / 0.14 x 0.12 in	-
Bad Mark	K Ø 6 mm / 0.24 in	Ø 6 mm / 0.24 in
Interleaves	L yes	no



EOS-241 M750

T A G E O S

Packing Details

	Dry Inlay	Wet Inlay
Product Code	2400000208	2400000215
Delivery Format	Roll (single row)	Roll (single row)
Core Inner Diameter	76 mm / 3 in	76 mm / 3 in
Roll Outer Diameter	tbc	tbc
Unwinding Direction	Inlay on outside of roll	Inlay on outside of roll
Standard Roll Size	tbc	tbc
Min. Guar. Yield/Roll	98.5%	98.5%
Box Dimensions	tbc	tbc
Roll/Box	tbc	tbc
Inlays/Box	tbc	tbc
Box Gross Weight	tbc	tbc
Pallet Dimensions	tbc	tbc
Boxes/Pallet	tbc	tbc
Inlays/Pallet	tbc	tbc
Pallet Gross Weight	tbc	tbc

Contact us:
Tageos HQ . 13400 rue de Pinville . 34000 Montpellier . France . sales@tageos.com



© 2022 Tageos All rights reserved. The pictures and illustrations found on this document are for illustration purposes only, and do not necessarily represent the exact products. Tageos is a registered trademark. All other trademarks are the property of their respective owners. Reproduction in whole or in part is prohibited without the prior written consent of the copyright owner. The information presented in this document does not form part of any quotation or contract, is believed to be accurate and reliable and may be changed without notice. No liability will be accepted by the publisher for any consequence of its use.